

# PIPE FLASHINGS FOR METAL ROOFING

## DMI PIPE FLASHINGS FOR METAL ROOFING - UNIVERSAL ROUND BASE

Used to waterproof roof penetrations in metal roofing panels. Made of pliable rubber with a 20 year limited warranty. Our flashings feature an aluminum fastening ring with grooved sealant holding base that is adjustable to most common roof pitches. These parts are 100% North American Made and qualify for the Buy American Plan. The #3 pipe flashings have a UPC Approval and Florida Building Code.

Standard (STD) flashings are made of Light Gray E.P.D.M. rubber with an application temperature range of -67 degF to 212 degF

High Temperature (High Temp) flashings are made of gray or red silicone with an application temperature range of -101 degF to 437 degF.



FL 28400.2 R1

Size	Fits Pipes	Base	Qty/Box	STD Grey	STD Black	High Temp Grey	High Temp Red (Special order)
#1	0.25" - 2.5"	4.75"	15	DML1GR	DML1BR	DML1HTG	DML1HT
#2	1.75" - 3"	6.25"	15	DML2GR	DML2BR	DML2HTG	DML2HT
#3	0.25" - 5"	7.75"	15	DML3GR	DML3BR	DML3HTG	DML3HT
#4	3" - 6.25"	9.25"	10	DML4GR	DML4BR	DML4HTG	DML4HT
#5	4.25" - 7.75"	10.5"	10	DML5GR	DML5BR	DML5HTG	DML5HT
#6	5" - 9"	13"	10	DML6GR	DML6BR	DML6HTG	DML6HT
#7	6" - 11"	14.5"	10	DML7GR	DML7BR	DML7HTG	DML7HT
#8	7" - 13"	16.5"	5	DML8GR	DML8BR	DML8HTG	DML8HT
#9	9" - 19"	25-1/4"	5	DML9GR	DML9BR	DML9HTG	DML9HT
#10	12" to 28"	34" square	5	DML10GS		DML10HTR	



## #3 COLORS PIPE FLASHINGS FOR METAL ROOFING

Now available in 13 colors to complement popular metal roofing panel color choices.

Used to waterproof roof penetrations in metal roofing panels. Made of pliable rubber with a 20 year limited warranty. Our flashings feature an aluminum fastening ring with grooved sealant holding base that is adjustable to most common roof pitches. These parts are 100% North American Made and qualify for the Buy American Plan.

The #3 fit pipes 1/4" up to 5" in diameter and have an 8" round base. These pipe flashings have a UPC Approval and Florida Building Code Approval. Designed to perform in installation temperature ranges of -67 degF to 212 degF.

Color	Part#
Black	DML3BR
Bright Red	DMLRD301BR
Cocoa Brown	DMLRD301BN
Charcoal	DMLRD301NG
Copper	DMLRD301CP
Dark Blue	DMLRD301DB
Dark Bronze	DMLRD301324
Dark Green	DMLRD301DG
Light Blue	DMLRD301LB
Medium Bronze	DMLRD301537
Tan	DMLRD301TAN
Taupe / Clay	DMLRD301422
Terracotta	DMLRD301TC
White	DMLRD301WT



## EA F ANGLE FLASHINGS - STEEP PITCH

Designed for use on extreme pitch metal roofs. Built in 40 degree angle to make installation on extreme pitch roofs quick and easy. Manufactured in a diamond base, in Black or Gray E.P.D.M.

Size	Fits Pipes	Qty/Box	Grey PN	Black PN
EA F	1/4" - 6"	10	EA101GA	EA101BA



## DMI E.P.D.M. PIPE FLASHINGS - SQUARE BASE PYRAMID

Used to waterproof roof penetrations in metal roofing panels. Available in standard 20 year EPDM. Our flashings feature an aluminum fastening ring with grooved sealant holding base that is designed to be installed as a diamond shape. These parts are 100% North American Made and qualify for the Buy American Plan. Standard (STD) flashings are made of

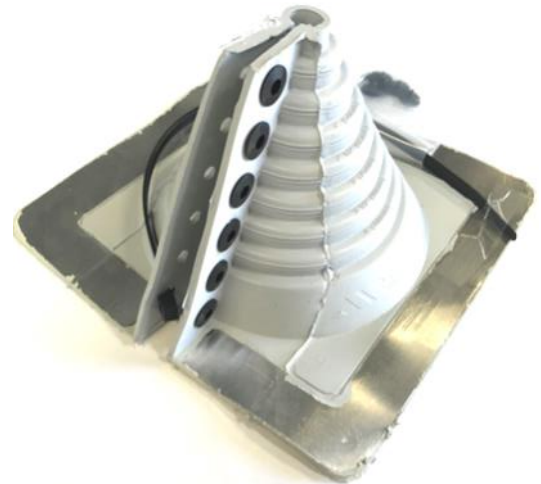
E.P.D.M. rubber with a application temperature range of -67 degF to 212 degF. #1 shown	Size	Fits Pipes	Base	Qty/Box	Grey PN / Black PN
	Mini	0.125" - 0.75"	2"	30	DML0GS / DML0BS
	#2	1.25" - 3"	6"	15	DML2GS
	#3	1/4" - 4"	8"	15	DML3GS/DML3BS
	#4	3" - 6"	10"	10	DML4GS/DML4BS
	#5	4" - 7"	11"	10	DML5GS/DML5BS
	#8	7" - 13"	17"	5	DML8GS/DML8BS
	#10	12" to 28"	34"	5	DML10GS



# RETROFIT FLASHINGS FOR METAL ROOFING

## DMI SQUARE BASE RETROFIT FLASHINGS

Designed to waterproof electrical conduit, masts, service poles and collared pipe penetrations through metal roofing panels. Includes corrosion resistant band and rivets for fastening. Accurate side markings make it easy to cut for a specific size. Light gray, square base E.P.D.M. rubber construction with UPC approval and 20 year warranty. Standard color is gray, however these parts are available by special order in black E.P.D.M. or red high temp silicone. Buy American Plan /100% N. American Made.



### GREY E.P.D.M.

Size	Fits	Base	Qty/Box	Part#
#101	1/2" - 4"	8"	5	DML101G
#201	4" - 9-1/4"	14"	5	DML201G
#301	9-1/4" - 16-1/4"		5	DML301G

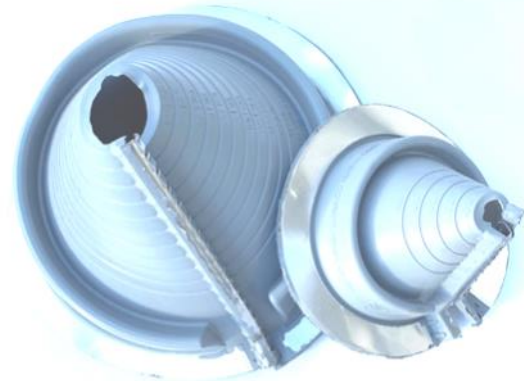
### RED HIGH TEMP SILICONE

Size	Fits	Base	Qty/Box	Part#HT
#102	1/2" - 4"	8"	5	DML102H
#202	4" - 9-1/4"	14"	5	DML202H
#302	9-1/4" - 16-1/4"		5	DML302H

FL 28400.3 R1

## DMI ROUND RETROFIT FLASHINGS - (Zipperboot)

Designed to waterproof electrical conduit, masts, service poles and collared pipe penetrations through metal roofing panels. Stainless steel fastening teeth interlock with the rubber for fastening at the split. E.P.D.M. rubber construction with UPC approval and 20 year warranty. Standard gray to be used on mill finish metal roofing. #802 are available for special order in black EPDM or a white high temperature silicone.



Size	Fits	Base	Qty/Box	Part#GR
*#1	1/4" - 2-3/4"	6-3/10"	10	DM801G
*#2	2" - 7-1/4"	10-3/4"	10	DM802G
*#3	3-1/4" - 10"	14-1/2"	5	DM803G

Size	Fits	Base	Qty/Box	Part#WT
#802	2" - 7-1/4"	10-3/4"	5	DM802W

#802 White High Temp is not American Made or BAP, and is made of white silicone <500 deg F.

## DEK-STRIP™ EXPANDABLE EDGED FLASHING

STRETCHES TO ANY SHAPE, SEALS, & STAYS

Wraps around almost any profile, paintable after installation, great for large, round pipes. Serpentine edges stretch up to 25% for added length. Handles vibration and expansion, TPE has a continuous service temperature range of -58°F to +240°F. Imported.

### APPLICATIONS INCLUDE:

Large square and round ducts, chimneys, gutter detail, parapet flashings, skylights, expansion joints, stepped roof, dissimilar roof profiles, transition wall, gambrel roof and flash between dissimilar materials.

### AVAILABLE SIZES:

- 7"x75' PN# DMDS775G
- 9"x75' PN# DMDS975G
- 12"x75' PN# DMDS1275G
- 18" x 50' PN# DMDS1850G (Special order)

